

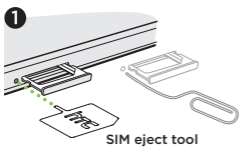
Your HTC One®

Inserting your microSIM card

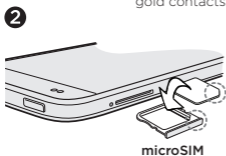
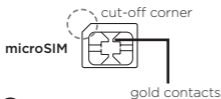
If not already inserted, follow the steps below to insert a microSIM card to connect to a 4G/LTE network.

IMPORTANT: USE A STANDARD MICROSIM ONLY.

Inserting a smaller size SIM (such as nanoSIM with an adapter or a modified SIM) may damage the card slot or cause the card to not fit properly.



1. Insert the tip of the SIM eject tool (or a small bent paperclip) into the small hole next to the microSIM card tray, and push it all the way in until the tray ejects.



2. Pull the microSIM card tray out. Place your microSIM (contacts facing down and cut-off corner facing out) onto the tray, and then insert the tray back into the slot.

Want some guidance on using your phone?

Go to www.htc.com/quickstart/. You'll find tutorials, the user guide, FAQs, latest news, and more.

© 2013 HTC Corporation. All rights reserved. HTC, the HTC logo, and HTC One are trademarks of HTC Corporation. LTE is a trademark of ETSI.

htc.com



91H0xxxx-xxM Rev.A