



CDU-680DOrA Mobile Broadband USB Modem+Disk™

Quick Installation Guide (Windows, Mac and Linux)

Ver. CDU680-UNT01

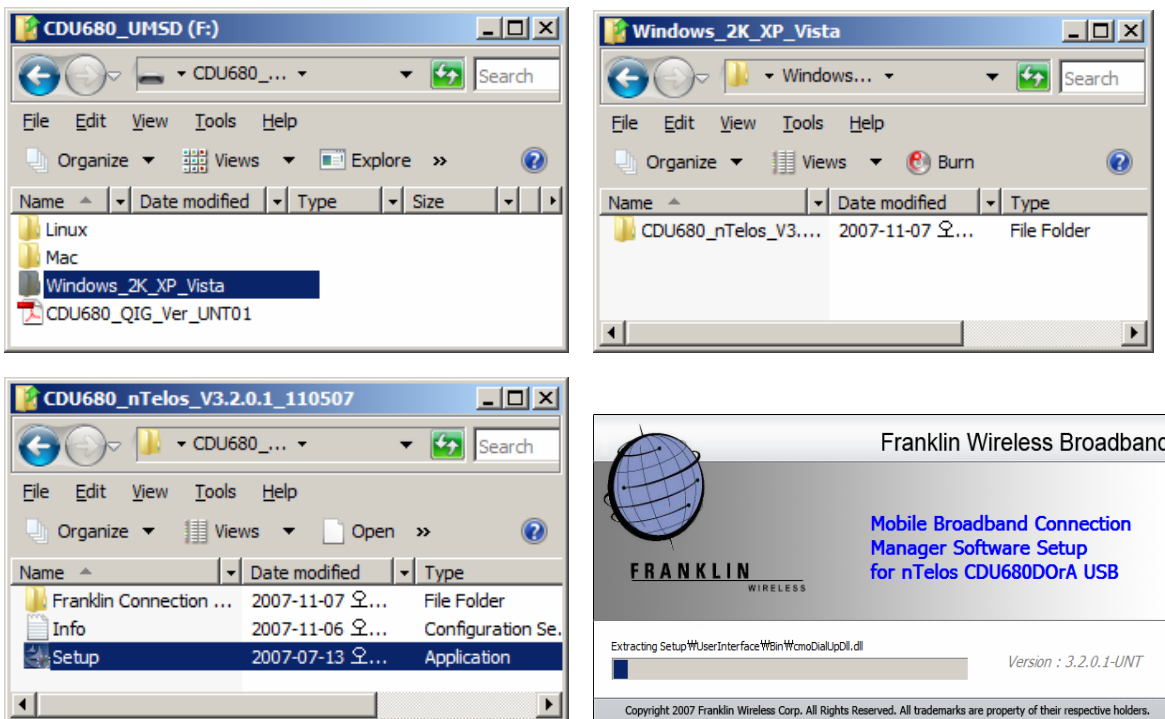
Setup for Windows® PC Users

For Windows® 2000, XP, Vista users only, Mac users please skip to “Setup for Mac Users”

Before connecting your PC or laptop to your service provider for Mobile Broadband Data Service, you must first install the Connection Manager software on your PC or laptop.


Connection Manager Software Installation (for Windows® 2000, XP, Vista users only)

1. Insert the CDU-680 USB Modem+Disk™ into an USB slot on your PC. The device will be shown as a removable storage on your computer. Go to the correct directory below to locate the installation files. Now please double-click on “Setup.exe” file to start.



2. This will automatically launch the InstallShield® Wizard which will guide you through the rest of the setup process.
3. Click 'Next' to install the software into the default destination. To install to a different folder click 'Browse' and select destination folder.
4. Make sure to select both Device Driver and Modem Manager UI, click 'Next'.
5. Click "install" and wait for Installation to complete.
6. Wait for your PC to reboot. You may need to restart your PC manually by selecting Start>Shutdown>Restart.

Starting a Data Session

1. Double-click the “nTelos (CDU680)” Connection Manager software icon  on your Windows® desktop to launch the application. You will see this user interface below appears:



2. Now your Franklin CDU-680 USB Card has to be inserted into one of the available USB slots on your computer. Once it is detected, the screen on the Connection Manager will start to change. The modem will go through a series of tasks to prepare the modem for a data session, these include:
 - i. Initializing the modem






- ii. Checking the connection
- iii. Searching for service




3. Once the modem completes the above tasks, which may take a few minutes, the window in the user interface will show: “**Disconnected**” indicating the modem is ready to connect to the Data Service. If the signal is low or does not exist at all, move to a different location to achieve the best signal condition in your area.



4. From here, click “Go” to start a data session. Click the minimize  button to minimize the user interface, the icon:  will appear in the System Tray on the right side of the Task Bar. To display the user interface again, click the icon:  in the System Tray.

Ending a Data Session

To end a data session, click the “Stop” button on the user interface. Close the Connection Manager window by clicking . It is now safe to remove the USB Card from your computer.

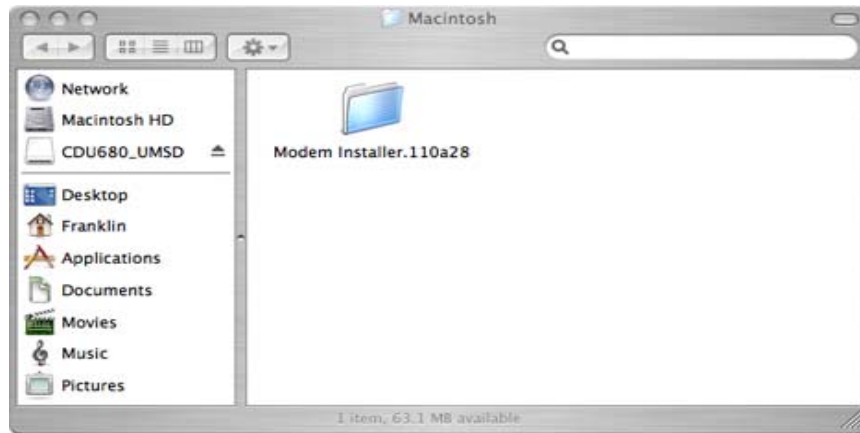
Setup for Mac Users

Connection Manager Software Installation for Mac Users

Insert your Mobile Broadband USB modem into any available USB port, and wait for the USB device icon



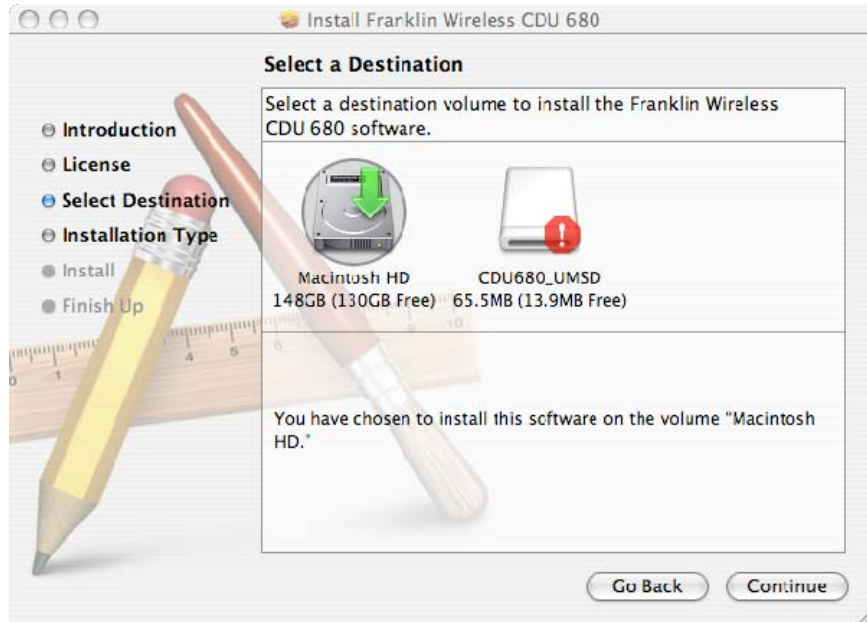
to appear on your desktop. Click on the icon to open the USB storage, and select the Macintosh directory.



Double-click on the "Modem Installer.110a28" folder




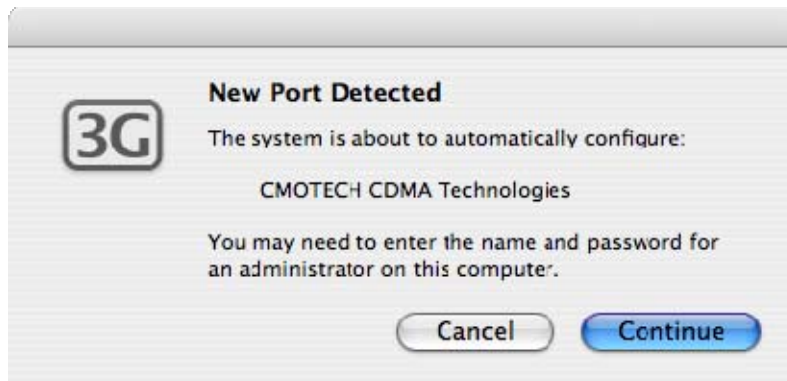
Double-click on the "Modem Installer" package to install your Connection Manager, a series of installation windows will pop up and guide you through the process.



The software installation will start after you click **Continue** in the above window and **Install** in the next. When done, the Mac will prompt you to restart your computer to finish your installation.

Launching the Connection Manager


Insert your USB Modem into any available USB port. After the USB device is detected by the Mac, the modem icon  will be displayed on the taskbar at the upper right corner on your desktop, indicating that the Connection Manager is launched and ready to connect.

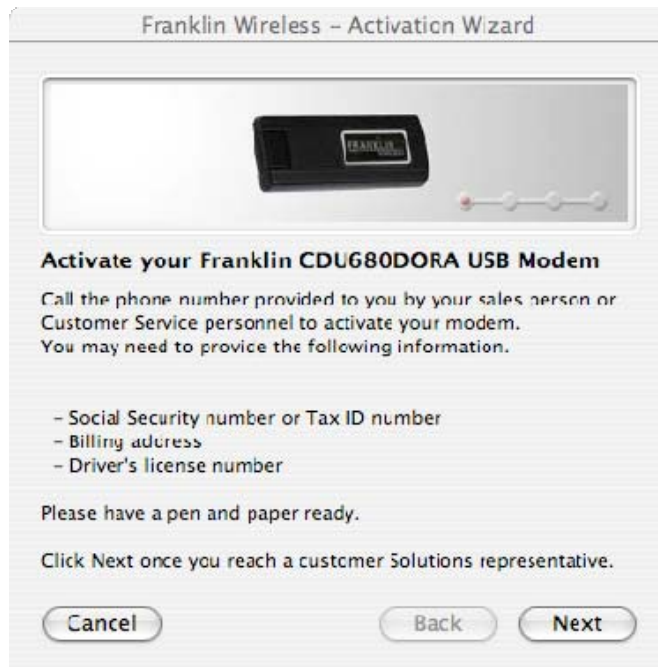


If this is the first time you have inserted the modem into that USB slot or you used other USB slots before this, your device will have to be confirmed and configured. You only need to click the **Continue** button to proceed on the above window pop-up, and enter your Mac password when asked.

Note: If your modem has been activated for service, please skip to "Starting a Data Session".

Activating CDU-680 USB Modem

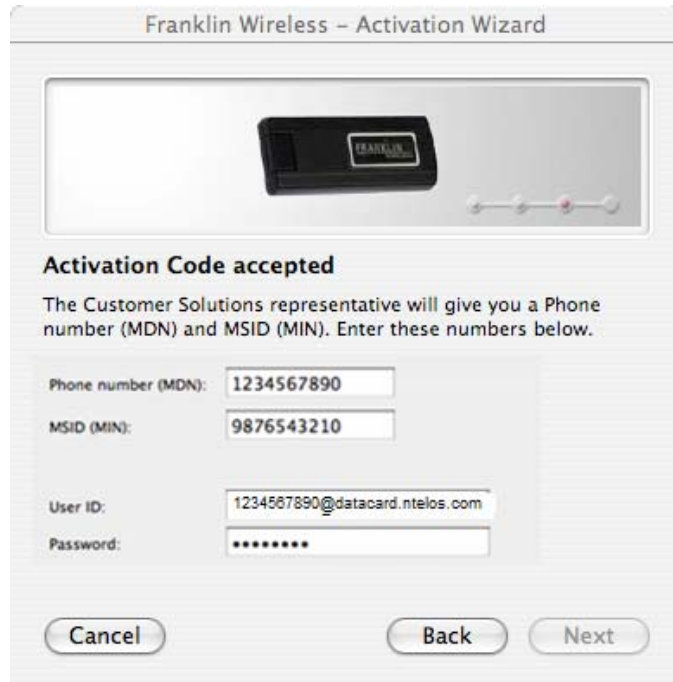
Click  icon to expand the menu and select **Activation** under **Settings** to start activation. Follow the instructions in the following window, and click **Next** to proceed.



You will be asked to enter the **Activation Code (MSL)**.








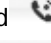


Follow by your assigned Phone Number (MDN) and MSID (MIN). Once you confirm this information, you may click **Next** again to activate your modem.



When your modem is successfully provisioned by your service provider, a window will pop up to confirm that the activation is successful. Click **Finish**, and your USB modem is ready to connect to your service provider's network. (For nTelos, User ID: MDN@datacard.ntelos.com, Password: ntelos)

Starting a Data Session

Insert your device into any available USB port. Wait for the modem to search for data service in your area. When service is found, you will see the signal bars appear next to the modem icon  on the menu bar. If the signal is low or does not exist at all, try a different location, preferably near a window or in an open space, to find the best signal condition in your area.

With the dots above the telephone icon  faded out indicating that the modem is not connected yet, click on  to expand the menu and select **Connect** to start a Data Session. Mac will attempt to connect to the Mobile Broadband Data Service, and the dots above the telephone will be turned on and off showing the connecting progress. To have word "Connecting..." scrolling across on the menu bar , go under  and check "Show status when connecting". When service is established, the dots will turn solid , indicating a data session is in service. To have your connection time displayed  on the menu bar icon, go under  and check "Show time connected".

Ending a Data Session

To end the data session, click the Signal icon  then select **Disconnect**. The modem is now disconnected and ready to re-connect.

Setup for Linux-Ubuntu Users

Scripts for Ubuntu Linux distribution are provided. You may need to develop your own scripts for other distributions.

1. Insert the CDU-680 USB Modem+Disk™ into an USB slot on your PC. The device will be shown as a removable storage on your computer.
2. The script files are located under the "Linux" directory. Copy the whole directory to your desktop.
3. Do the following steps:
 - a. Open terminal
 - b. Run "cd Desktop/Linux"
 - c. Run "sudo ./connect"
 - d. Enter root password (Admin Password)
4. Device will switch to modem mode and attempt to connect.
5. To disconnect, press Ctrl-C twice.

FOR SIP only (QCMIP=0) Carriers

SIP carrier case, you may need to modify following part at "execute.sh" file.

Please replace Username and Password with your Service providers (SIP User ID and Password)

```
"Phone = #777\nUsername = <MDN>@datacard.ntelos.com\nPassword = ntelos" >>  
cdu680config
```

SIP Username and Password information:

nTelos :

1x

Login: <MDN>@datacard.ntelos.com, EX:1234567890@datacard.ntelos.com

Password: ntelos

EVDO

Login: <MDN>@evdo.ntelos.com, EX:1234567890@evdo.ntelos.com

Password: ntelos